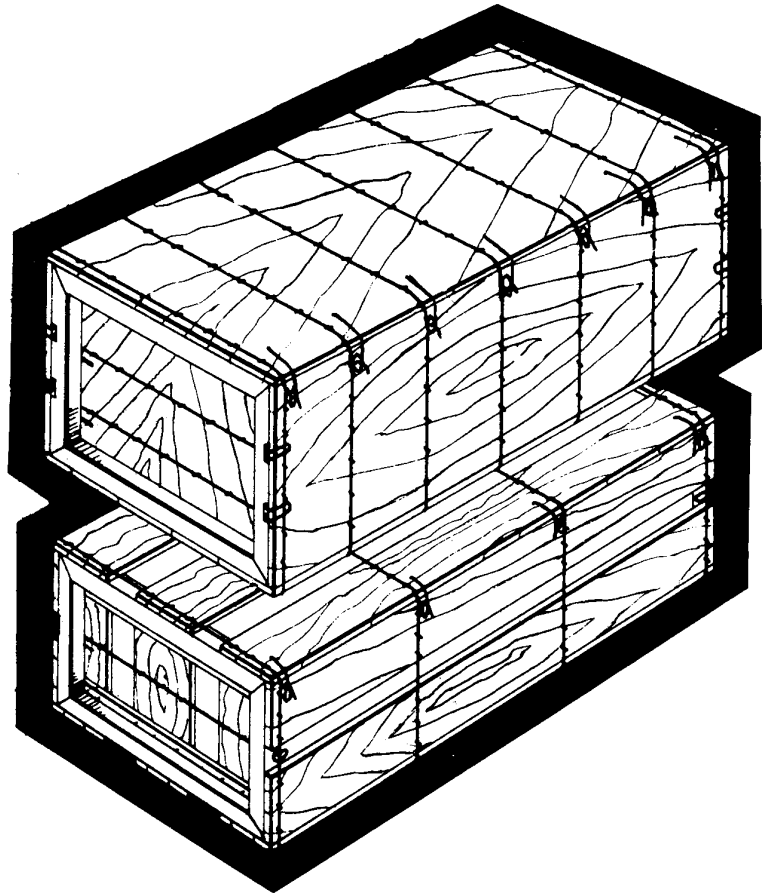


design facts

Volume 1 Number 3

Wirebound boxes and crates

IDENTIFYING THE ELEMENTS OF WIREBOUND BOXES AND CRATES



▪ Rockaway, New Jersey

-B-

Back: That portion of an upright crate which is directly opposite the closing face, designated as section 3 on the blank.

Base: A framework of lumber on which an article is placed for shipping.

Batten: A reinforcing piece of lumber usually the same thickness as the cleats, attached to an end, attached to the top of an upright crate, or forming part of the framework of the base.

Batten, edge: A batten adjacent to a cleat on an assembled box or crate.

Batten, intermediate: A batten between edge battens.

Blank: A flat, unassembled box or crate, exclusive of the ends, or, on an upright crate, exclusive of the top and base. (Formerly called "mat")

Bottom: That portion of a box or crate on which it rests during normal packing and handling; designated as section 3 on the blank.

Box: A container with no openings in any face.

-C-

Cleat: One of the pieces of lumber which forms the framework of a wirebound box or crate and to which face boards are stapled.

Cleat, wide: A cleat wider than it is thick.

Cleat, intermediate: A cleat between the outside rows of cleats; designated as IC-1, IC-2, etc.

Cleat, outside: A cleat on an outer edge of the blank, to which a base, top, or end is attached.

Cleat location: The distance measured from the outer edge of the container to the inner edge of each intermediate cleat.

Crate: A container with openings in one or more faces.

-D-

Dimensions, inside: The measurement of length, width, and depth, inside the container, and always given in that order.

Length: The distance between the inside faces of the ends, or, on an upright crate, the distance from the top of the base to the inner face of that part of the top nearest the base.

Width: The distance between the inside faces of the sides.

Depth: The distance between the inside faces of the top and bottom, or, on an upright crate, the distance between front and back.

Cleat to cleat: The distance between the inside edges of the outside cleats on the blank.

Dimensions, outside: The overall length, width, and depth of a box or crate.

-E-

End: A face placed against the outside cleats at right angles to the faces of the blank.

End, All-Bound: An end reinforced with steel binding wires terminating in Rock Fasteners; used in an All-Bound (Style 3) box or crate.

End, battened: An end reinforced with battens, used in Rock Fastener (Style 2) and twist wire (Style 1) boxes and crates.

End, lined: An end reinforced with liners stapled across the grain; used in Rock Fastener (Style 2) and twist wire (Style 1) boxes and crates.

End, plain: An end without reinforcing of any kind.

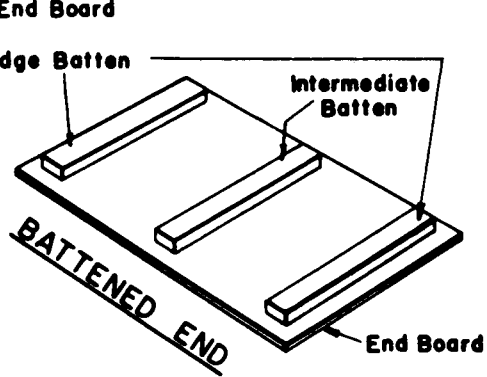
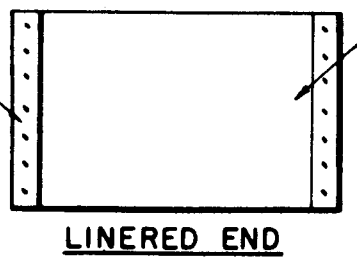
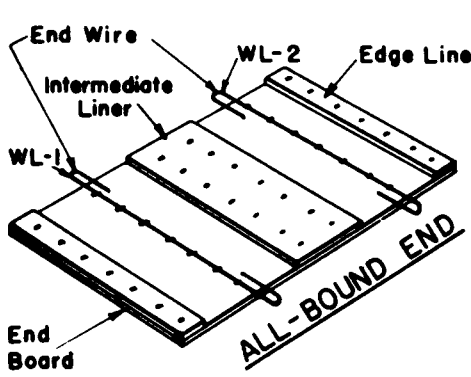
End board: See face board.

-F-

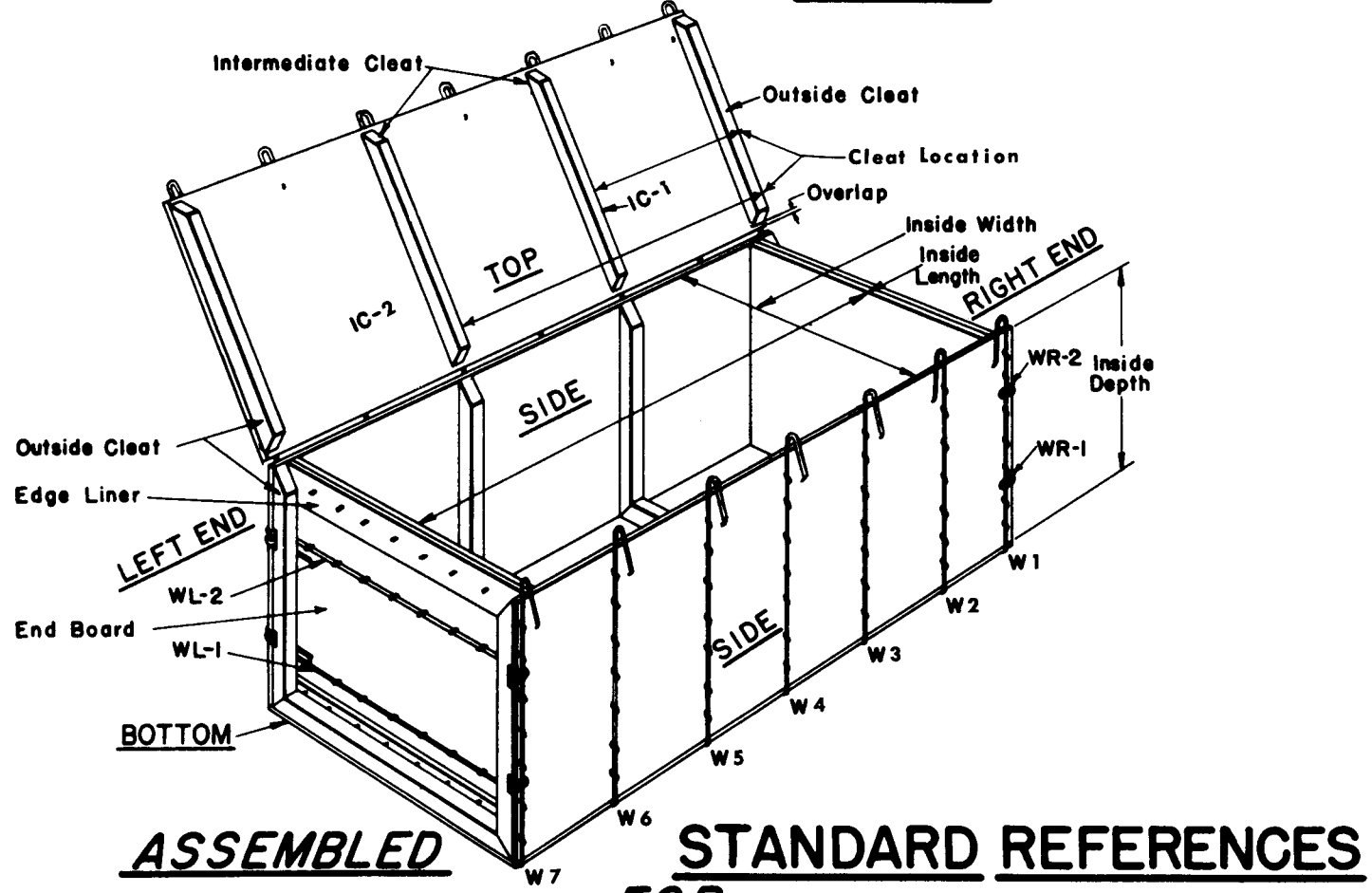
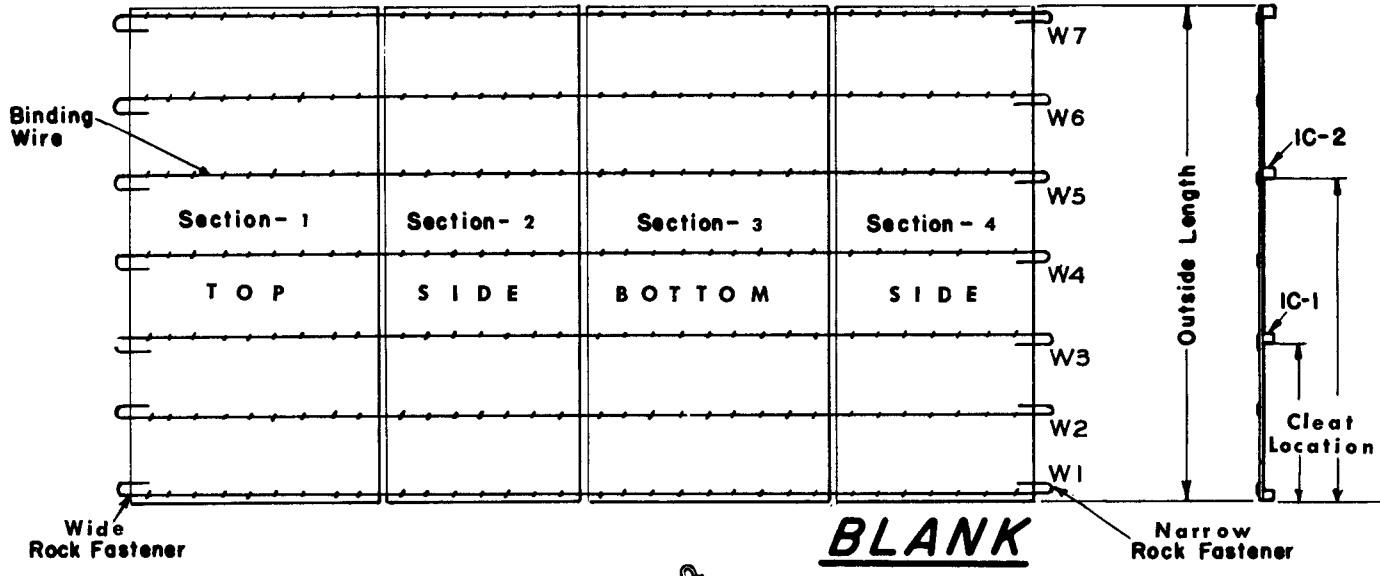
Face: One of the surfaces of a container.

Face board: The material used for the faces of a box or crate.

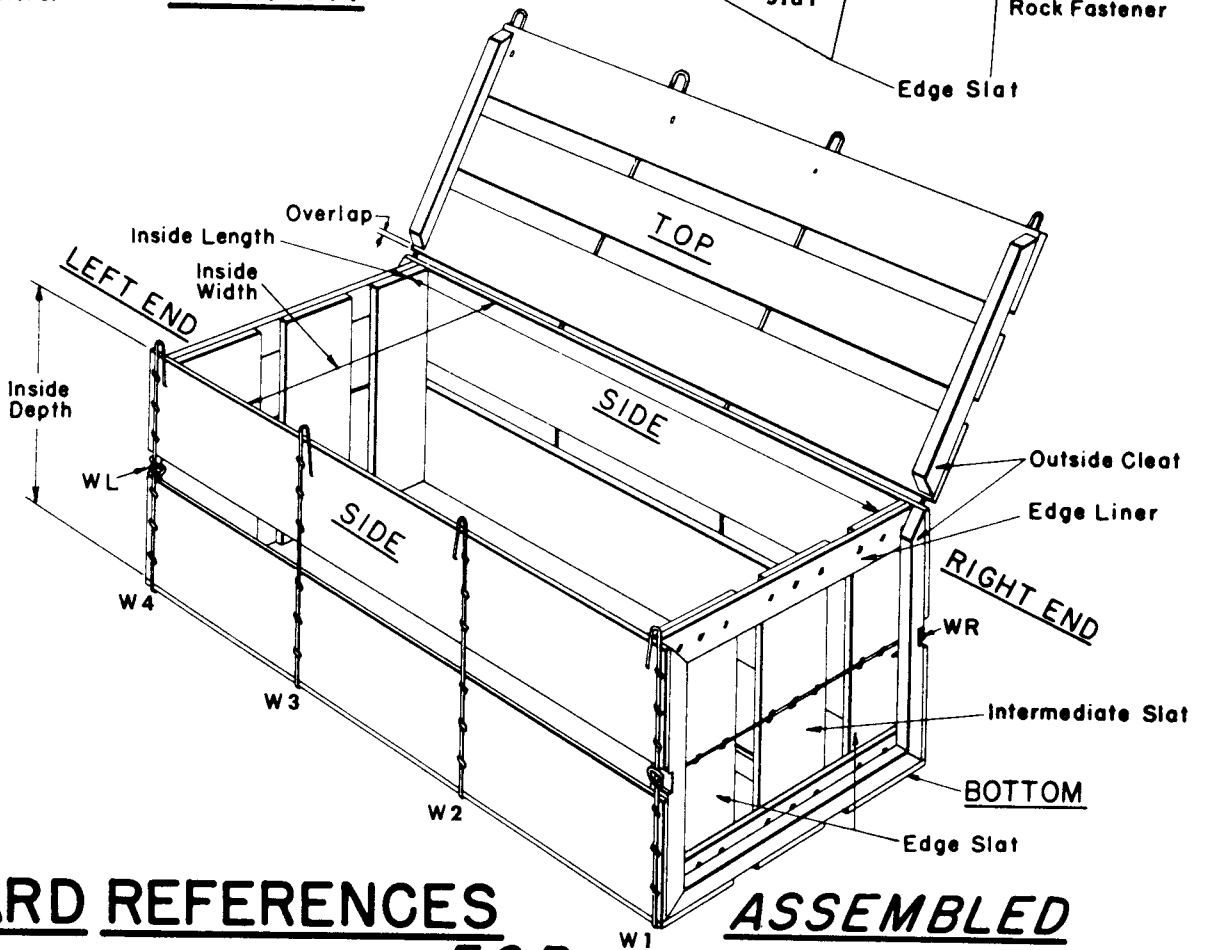
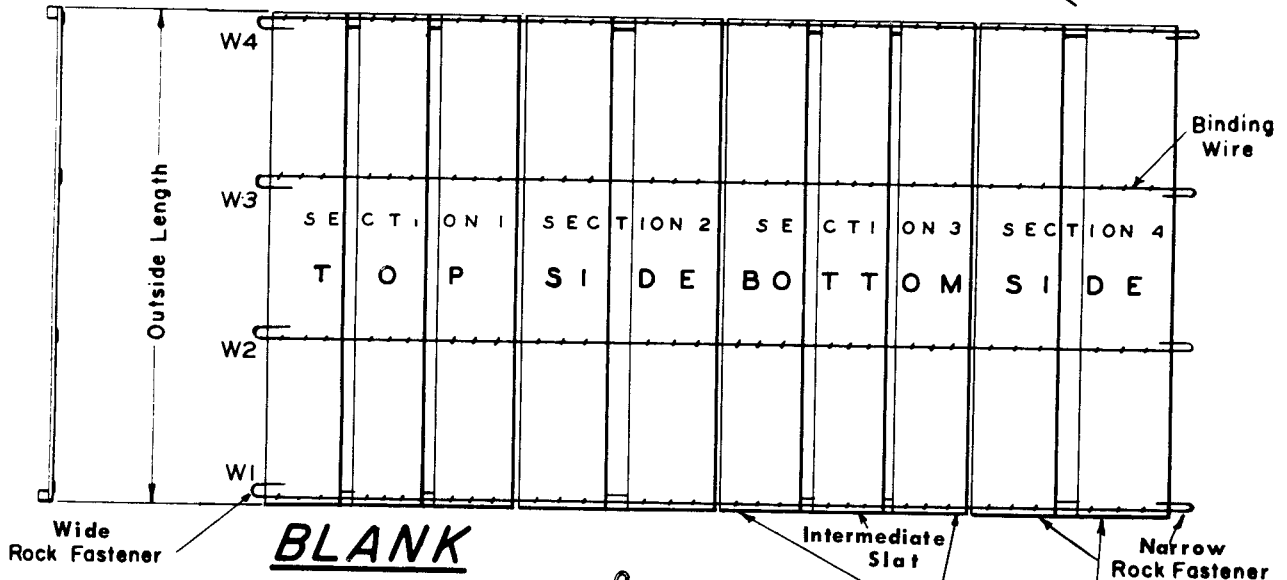
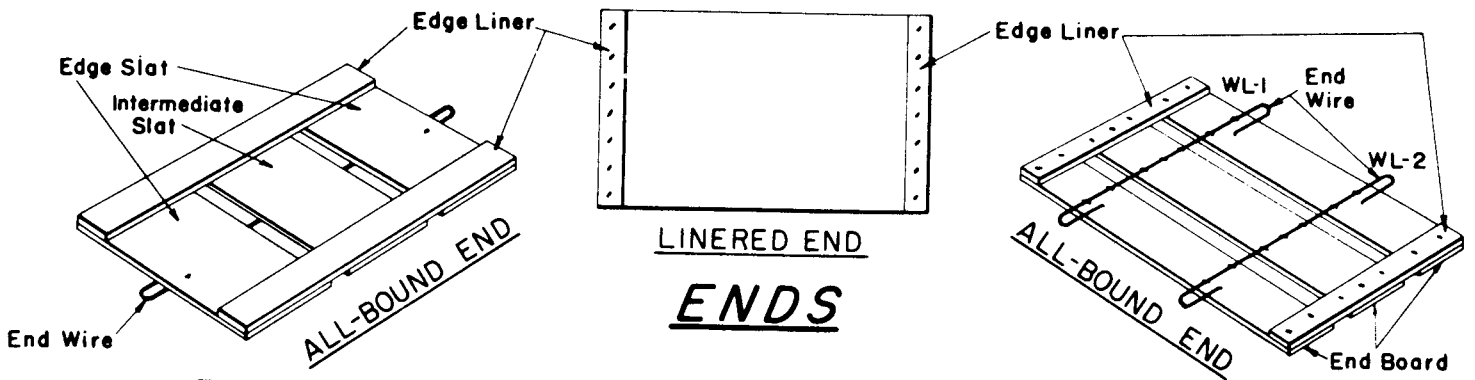
Front: That portion of an upright box or crate which forms the closing face; designated as section 1 on the blank.



ENDS



STANDARD REFERENCES
FOR
WIREBOUND BOXES



STANDARD REFERENCES
FOR
WIREBOUND CRATES

ASSEMBLED

-L-

Liner: A reinforcing piece of thin wood attached to an end (or top or bottom of an upright crate) at right angles to the grain of the boards.

Liner, edge: A liner attached to the outer edges of the end (or to the top or bottom of an upright crate).

Liner, intermediate: Liners between edge liners.

Liner, wide: A liner attached with two rows of staples.

-O-

Opening: The space between boards on a face of a crate.

Overlap: The material extending beyond the edges of the cleats, which, in the assembled container, covers the edge of the material in the adjoining sections.

-R-

Rock Fastener: A loop on the end of a binding wire, the prong of which is firmly anchored in a board or cleat.

-S-

Section: One face of a blank.

Skid: Thick pieces of wood attached to the bottom or base of a box or crate.

Slat: A board used in a face of a crate.

Slat, diagonal: A board fastened diagonally across a face.

Slat, edge: A board at the edge of a box or crate.

Slat, intermediate: A board between edge slats.

Staple: The U-shaped piece of wire with pointed ends, used in constructing the blank, or attaching battens to ends, or ends to cleats.

Staple, end: A staple used to attach end boards to battens and cleats.

Staple, inside: A staple which straddles an intermediate wire on the blank or a wire on an end, driven through the board.

Staple in cleats: A staple driven through the board into a cleat, usually straddling a binding wire.

Staple, liner: A staple used to fasten liners to ends.

Staple, dimensions: The length, measured inside the legs, and the gauge of the wire from which the staple is made.

Staple spacing: The distance between centers of staples in a row.

-T-

Top: The part of the box or crate which is uppermost when the container is resting on its bottom or base.

-V-

Veneer: Rotary cut or sliced lumber.

-W-

Wire, binding: Round steel wire stapled to the face boards on wirebound boxes and crates for reinforcement. Designated as W1, W2, etc.

Wire, end: A binding wire stapled to an end and designated as WL1, WR2, etc. where L and R refer to left and right end of the container. On an upright crate, L and R refer to the base and top respectively.

Wire, intermediate: A wire stapled between the outside wires.

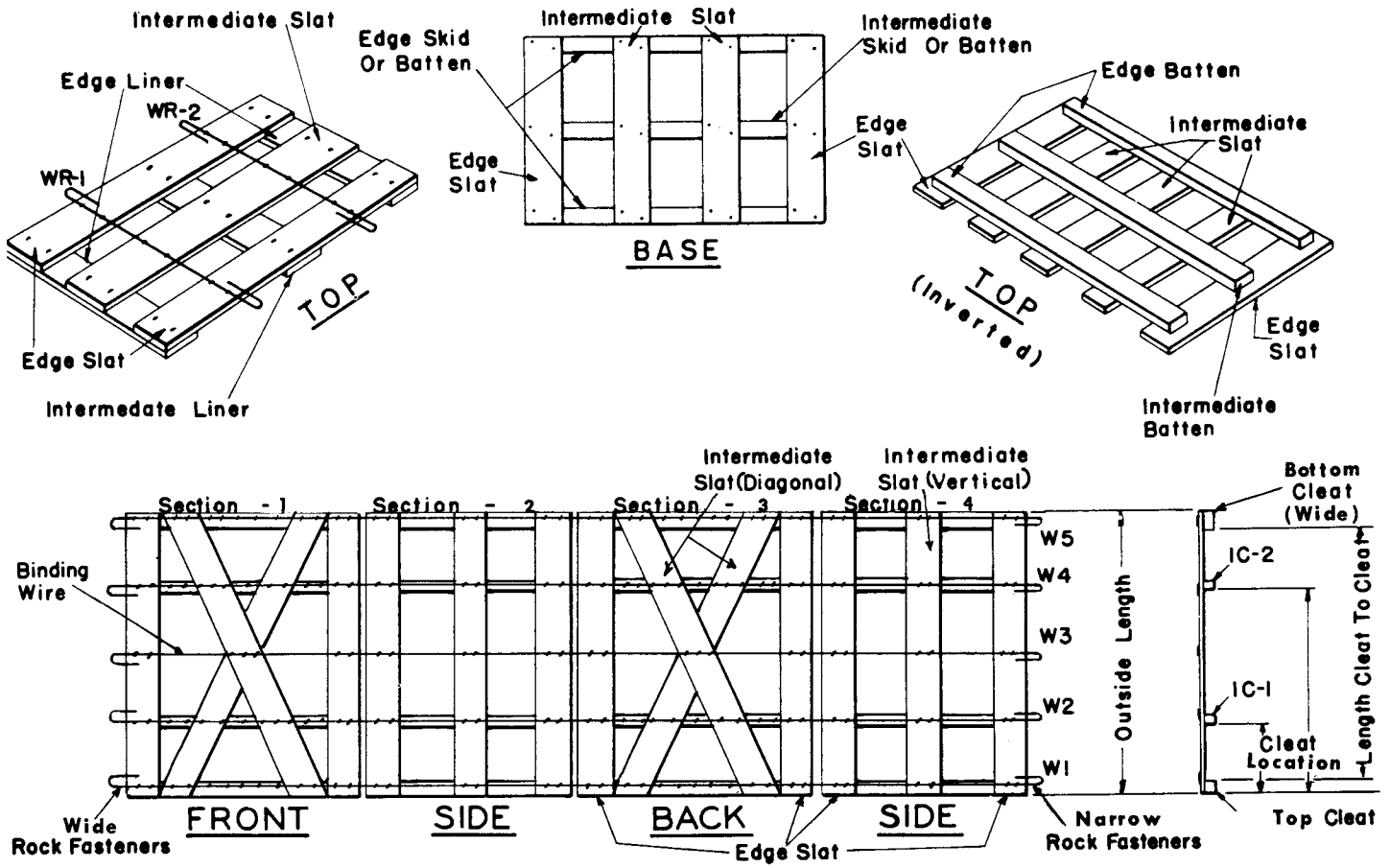
Wire, outside: A wire stapled over the cleats at the edges of the blank.

Wire location: The distance measured from the outer edge of the container to the intermediate wires.

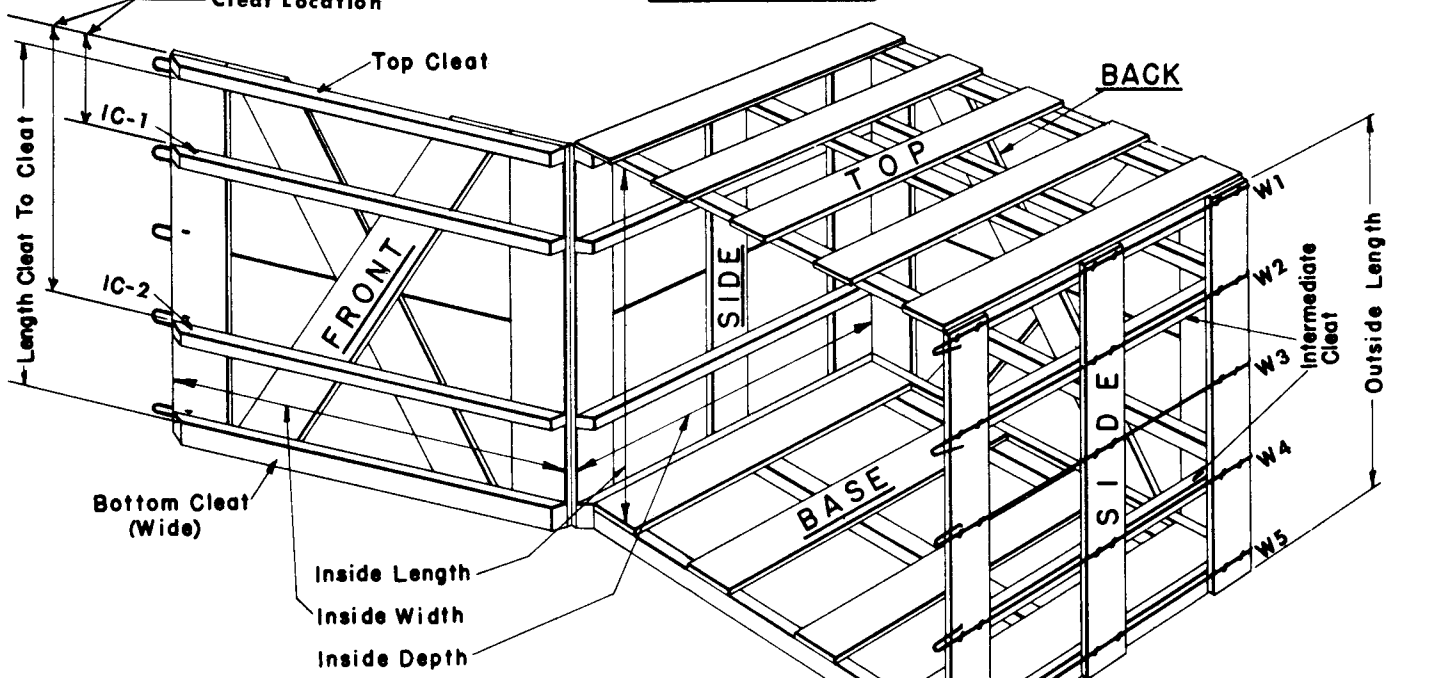
* * * * *

Note: For Standard References for Pallet Containers, see Design Facts Vol. 3, No. 1.

Explanation of terms peculiar to Duraboxes will be found in Bulletin No. 375.



BLANK



ASSEMBLED

STANDARD REFERENCES
FOR
WIREBOUND
WRAP-AROUND AND HOOD CRATES