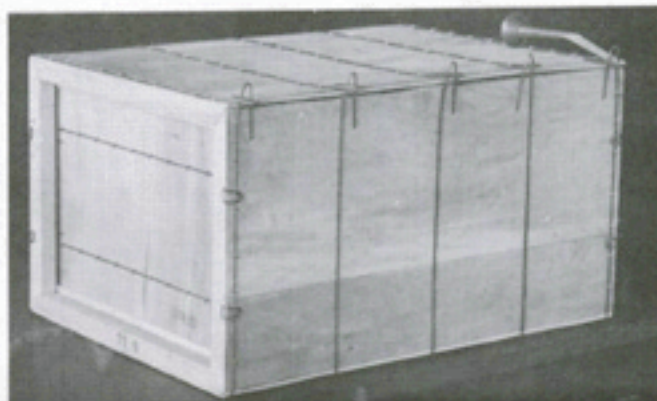


SALLEE CLOSER

**For Closing Rock Fastener
and All-Bound Boxes
and Crates**



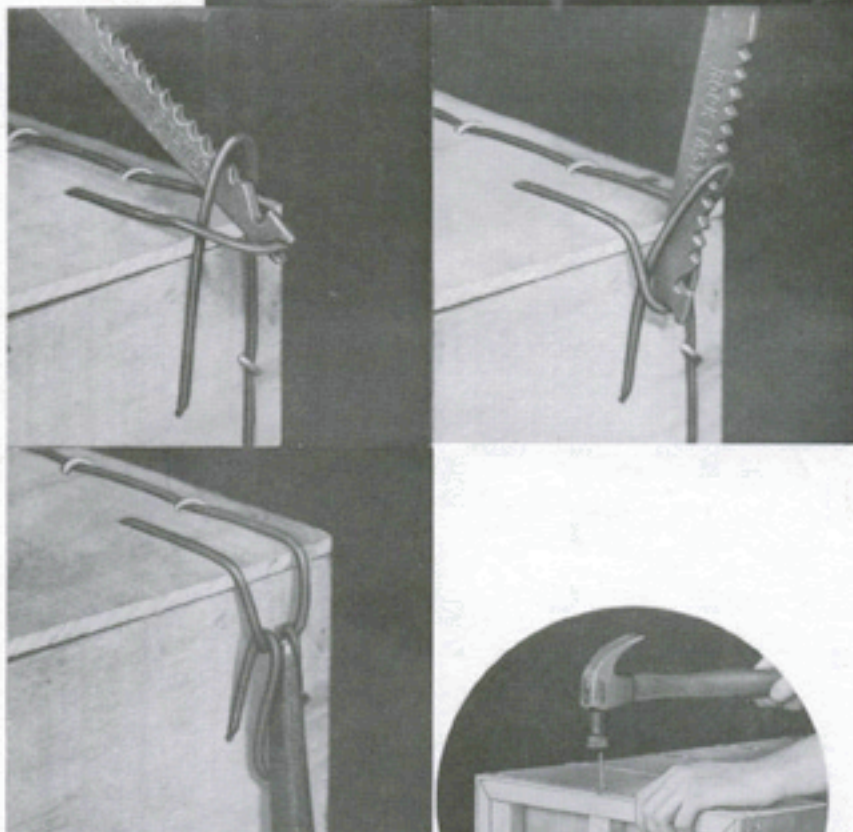
Part #199.40



DIRECTIONS FOR USE:

1. Close box with top Rock Fasteners over side Rock Fasteners.
2. Insert Sallee Closer through side Rock Fastener and catch top Rock Fastener in notch of tool.
3. Raise handle of Sallee Closer to slightly beyond vertical position and push top Rock Fastener down against side of box.
4. Complete closing by swinging handle of Sallee Closer down as far as possible.
5. When box is Rock Fastener type, (Style 2), drive a nail through top cleat into each intermediate batten.

SALLEE CLOSERS are available from manufacturers of wirebound boxes and from Stapling Machines Co., Rockaway, New Jersey.



STAPLING MACHINES CO.

Division of Rockaway Corporation

21 Pine Street, Rockaway, New Jersey 07866